

Matriz de compatibilidade	1
Atualização de firmware - Versão 7.1.070, Release 1130	1
Atualização de firmware - Versão 7.1.070, Release 1124	2
Procedimento resumido para atualização de firmware	2
Verificar integridade do arquivo.....	9
Verificar a versão do firmware após a atualização	10

Matriz de compatibilidade

SC 3170-24G-4X SC 3170-24GP-4X SC 3170-48G-6X SC 3170-48GP-6X	SC3170-IBOS710-XXXXX.ipe
--	--------------------------

Atualização de firmware - Versão 7.1.070, Release 1130

Boot image	MD5 digest
sc3170-ibos710-boot-r1130.bin	04b5f32ad2728086f9811d137d860a36
System image	MD5 digest
sc3170-ibos710-system-r1130.bin	226043edc6f76d709a36ec32502b6d34
IPE file	MD5 digest
SC3170-IBOS710-R1130.ipe	787f31401d76e21cea3f5ac80c7790df

Problemas resolvidos

- Sintoma: Falha ao adicionar uma regra a uma ACL aplicada à direção de entrada ou saída de todas as interfaces.

Condição: Este sintoma ocorre se você adicionar uma regra a uma ACL após aplicá-la à direção de entrada e saída de todas as interfaces.
- Sintoma: O switch pode reinicializar inesperadamente com baixa probabilidade.

Condição: Este sintoma ocorre se o switch estabelece uma conexão TCP e retransmite poucos pacotes TCP.
- Sintoma: O painel de navegação esquerdo da interface Web não possui o ícone para ocultar o painel de navegação.

Condição: Este sintoma ocorre se você efetuar login na interface Web do dispositivo.

São José, 15/10/2025

Atualização de firmware - Versão 7.1.070, Release 1124

Boot image	MD5 digest
sc3170-ibos710-boot-r1124.bin	3fd294dfc4965951915d59b66b174b00
System image	MD5 digest
sc3170-ibos710-system-r1124.bin	f8d95f5e1af00ce1d564b1cf53e698c0
IPE file	MD5 digest
SC3170-IBOS710-R1124.ipe	2cc5bf1e3b84aaf2198b1661cdf19f71

Melhorias

- Versão de lançamento

• São José, 12/06/2024

Procedimento resumido para atualização de firmware

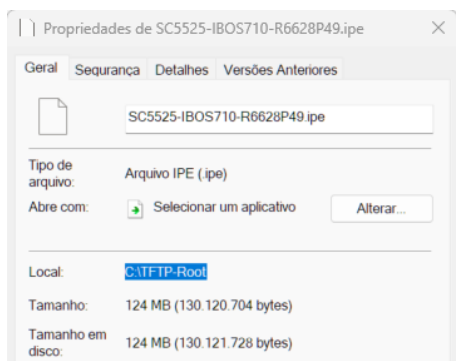
ATENÇÃO: Altere a sintaxe de comandos adequando a mesma para o uso do nome de arquivo em questão.

O procedimento completo pode ser consultado na documentação da série "Intelbras SC 3170 - CLI configuration guides.rar" no capítulo, "Fundamentals Configuration Guide/Software upgrade".

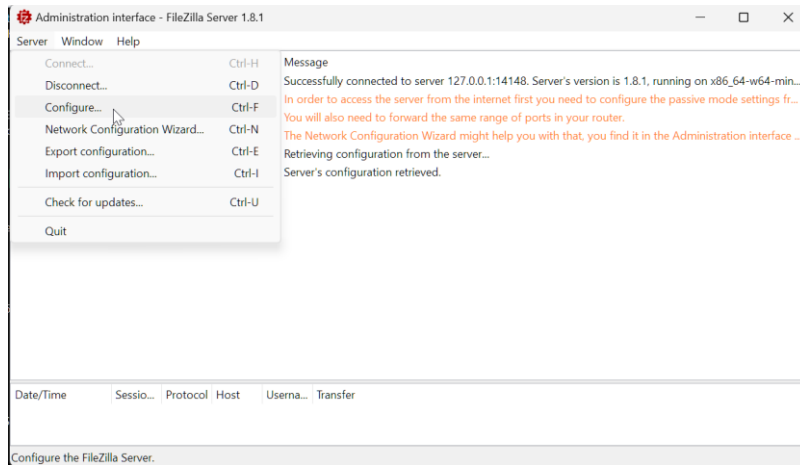
.ipe file—Compressed software image package file.

Designar uma pasta para armazenamento do arquivo de firmware

No caso "C:\TFTP-Root"

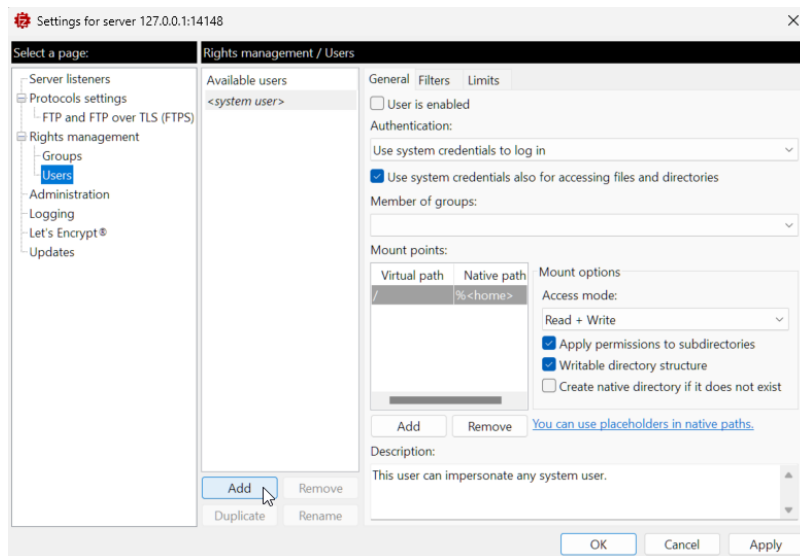


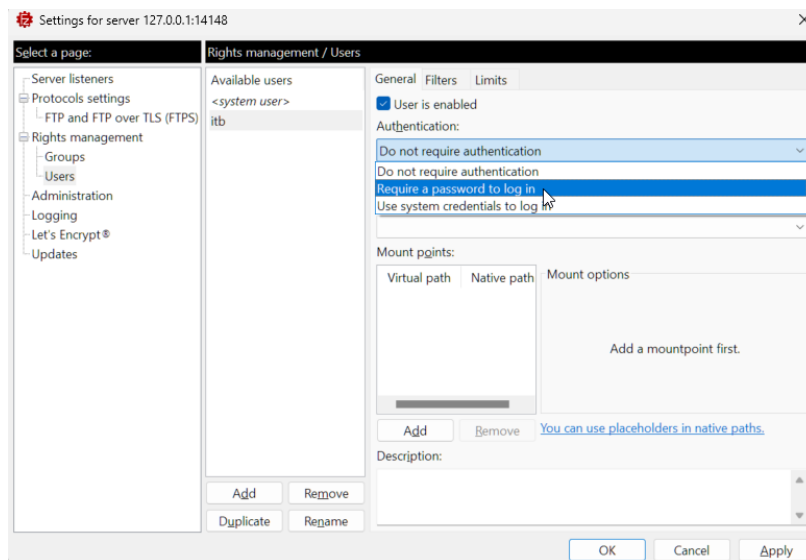
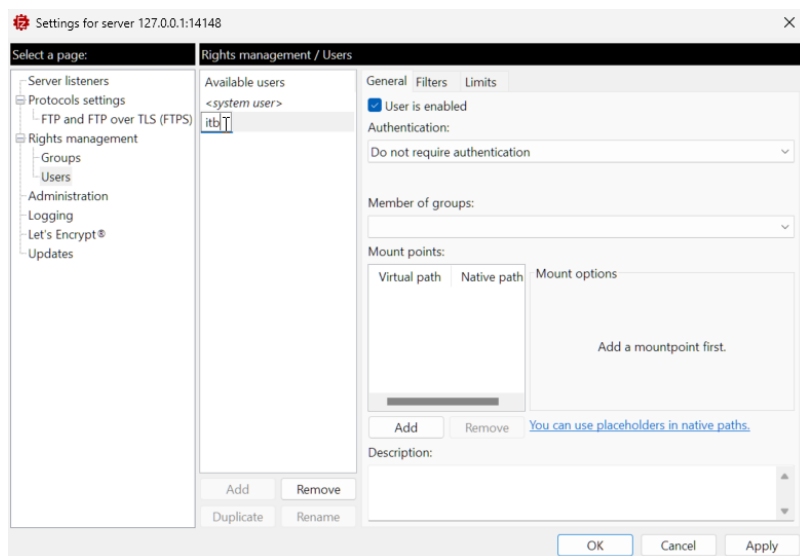
Configurar um servidor FTP. No caso o Filezilla esta sendo utilizado. <https://filezilla-project.org/>

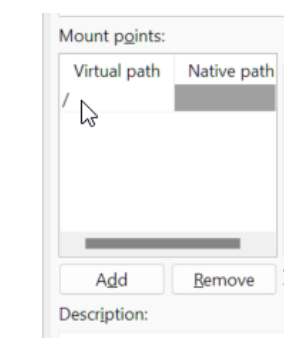
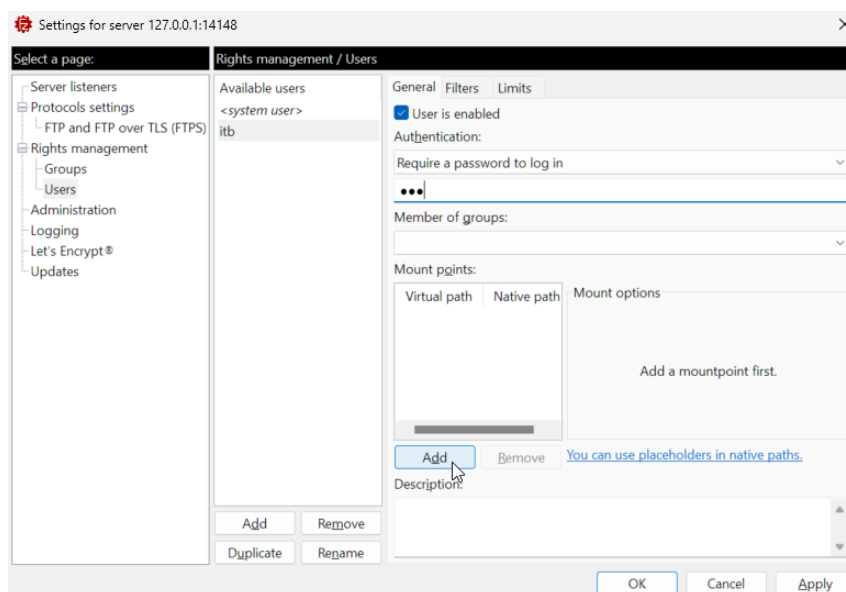
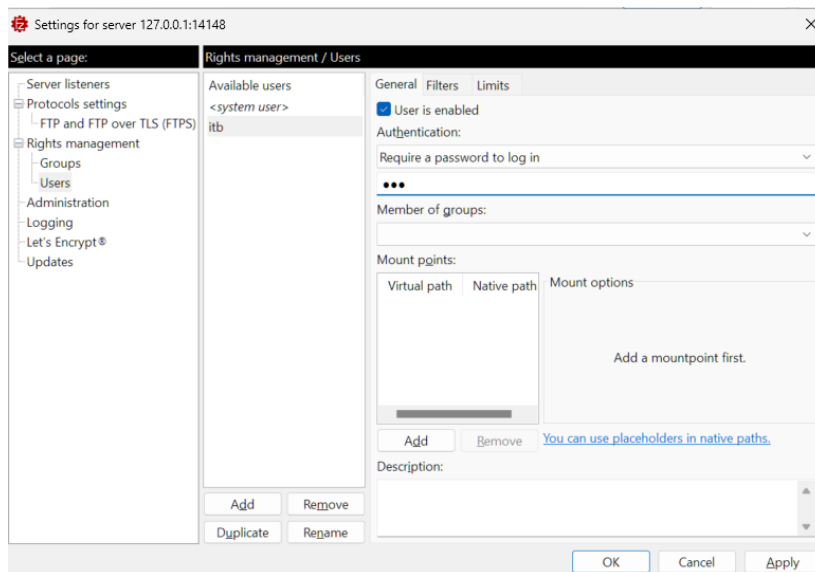


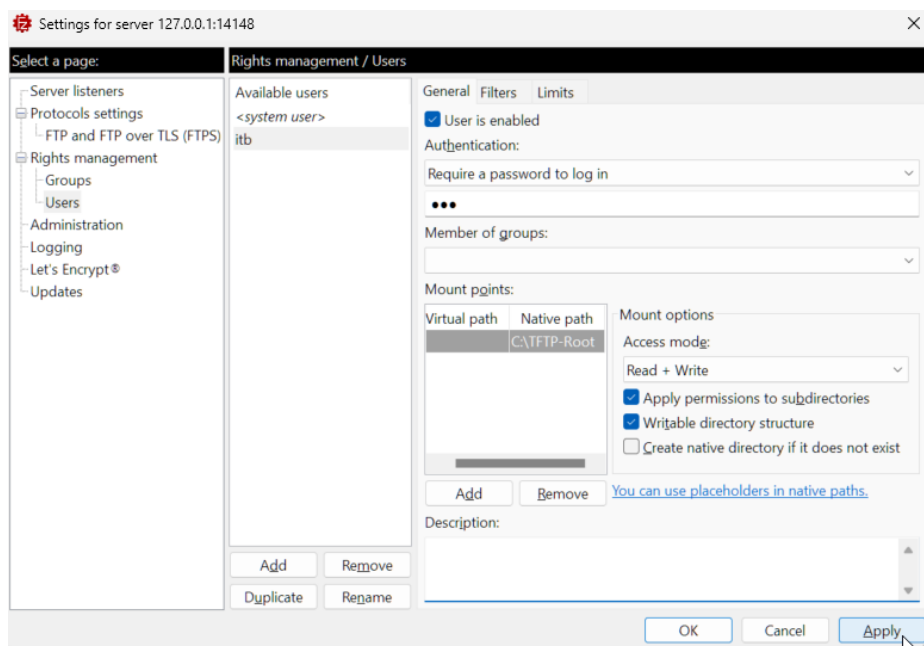
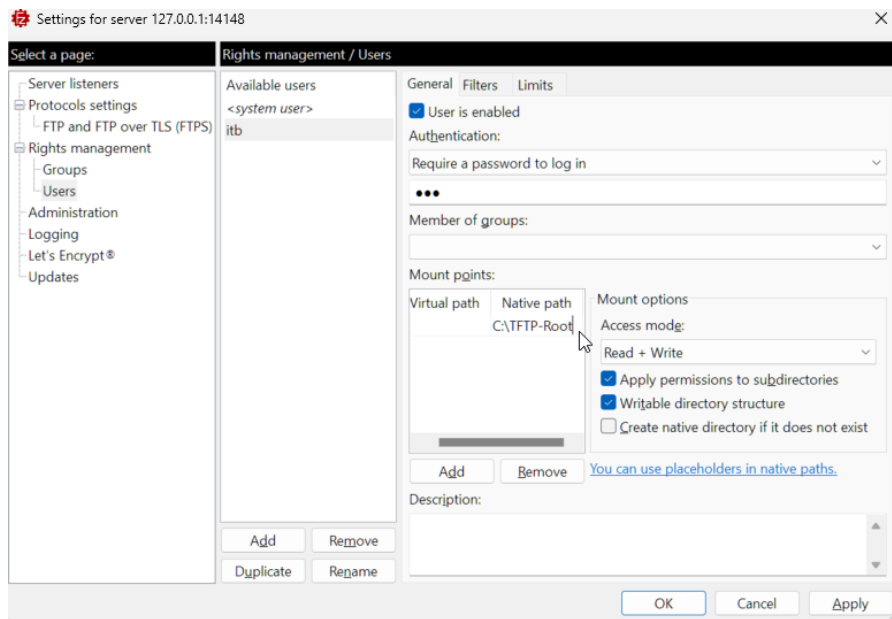
Criar o usuário “itb” e senha “itb”

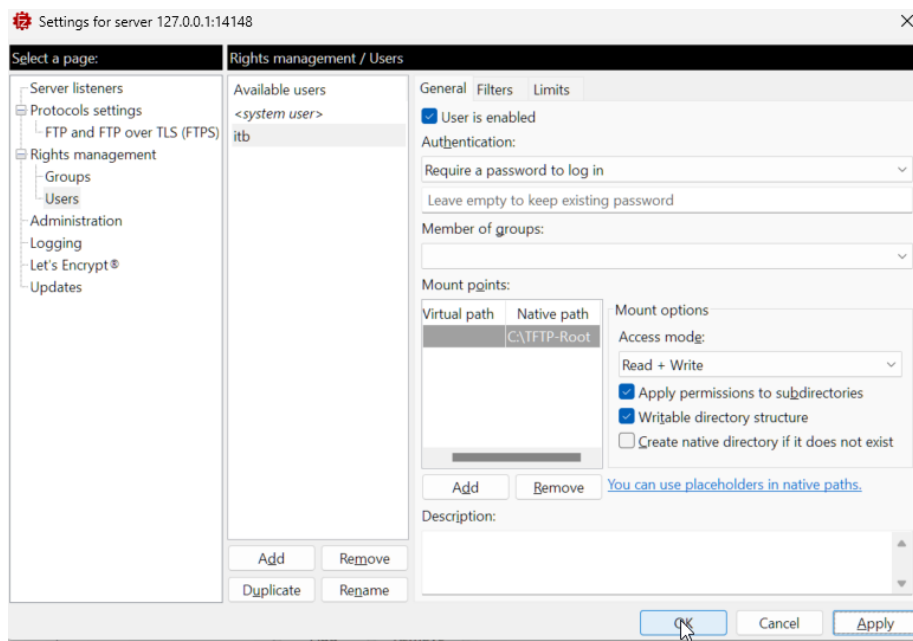
Configurar os parâmetros Virtual path “/” e Native path “C:\TFTP-Root”











Efetuar o login no servidor FTP a partir do equipamento que receberá a atualização

```
<SC 3170-48G-6X>ftp 10.100.65.155
Press CTRL+C to abort.
Connected to 10.100.65.155 (10.100.65.155).
220-FileZilla Server 1.8.2
220 Please visit https://filezilla-project.org/
User (10.100.65.155:(none)): itb
331 Please, specify the password.
Password:
230 Login successful.
Remote system type is UNIX.
```

ATENÇÃO: Altere a sintaxe de comandos adequando a mesma para o uso do nome de arquivo em questão.

Transferir o arquivo “.ipe” do servidor FTP para o equipamento que receberá a atualização

```
ftp> get SC3170-IB0S710-R1124.ipe
227 Entering Passive Mode (10,100,65,155,206,182)
150 Starting data transfer.
.....
226 Operation successful
59250688 bytes received in 82.385 seconds (702.34 Kbytes/s)
ftp> █
```

Efetuar o logout a partir do equipamento que receberá a atualização e verificar se o arquivo “.ipe” foi transferido para a flash do equipamento

```
ftp> quit
221 Goodbye.
<SC 3170-48G-6X>dir
Directory of flash:
 0 -rw-      59250688 Jun 12 2024 09:52:38 SC3170-IBOS710-R1124.ipe
 1 drw-          - Dec 31 2012 21:00:53 diagfile
 2 -rw-         735 Jan 01 2013 02:07:30 hostkey
 3 -rw-        5109 Jun 11 2024 15:54:20 ifindex.dat
 4 drw-          - Dec 31 2012 23:12:18 logfile
 5 drw-          - Dec 31 2012 21:01:17 pki
 6 -rw-      4858880 Nov 21 2023 10:06:48 sc3170-ibos710-boot-r1124.bin
 7 -rw-     54452224 Nov 21 2023 10:07:15 sc3170-ibos710-system-r1124.bin
 8 drw-          - Dec 31 2012 21:00:53 seclog
 9 -rw-         591 Jan 01 2013 02:07:30 serverkey
10 -rw-       12204 Jun 11 2024 15:54:23 startup.cfg
11 -rw-      317205 Jun 11 2024 15:54:23 startup.mdb
12 drw-          - Nov 21 2023 10:11:26 versionInfo

505856 KB total (320776 KB free)

<SC 3170-48G-6X>
```

ATENÇÃO: Altere a sintaxe de comandos adequando a mesma para o uso do nome de arquivo em questão.

Executar a atualização do firmware no equipamento

- boot-loader file flash:/SC3170-IBOS710-R1124.ipe all main
- This command will set the main startup software images. Continue? [Y/N]:y
- Do you want to delete flash:/SC3170-IBOS710-R1124.ipe now? [Y/N]:y
- save
- The current configuration will be written to the device. Are you sure? [Y/N]:y
- (To leave the existing filename unchanged, press the enter key):
- Validating file. Please wait...
- Are you sure you want to continue the save operation? [Y/N]:
- reboot
- This command will reboot the device. Continue? [Y/N]:y
- Now rebooting, please wait.....


```
<SC 3170-48G-6X>boot-loader file flash:/SC3170-IBOS710-R1124.ipe all main
Verifying the file flash:/SC3170-IBOS710-R1124.ipe on slot 1.....Done.
INTELBRAS SC 3170-48G-6X images in IPE:
  sc3170-ibos710-boot-r1124.bin
  sc3170-ibos710-system-r1124.bin
This command will set the main startup software images. Continue? [Y/N]:y
Add images to slot 1.
File flash:/sc3170-ibos710-boot-r1124.bin already exists on slot 1.
File flash:/sc3170-ibos710-system-r1124.bin already exists on slot 1.
Overwrite the existing files? [Y/N]:y
Decompressing file sc3170-ibos710-boot-r1124.bin to flash:/sc3170-ibos710-boot-r1124.bin....Done.
Decompressing file sc3170-ibos710-system-r1124.bin to flash:/sc3170-ibos710-system-r1124.bin.....Done.
Verifying the file flash:/sc3170-ibos710-boot-r1124.bin on slot 1... Done.
Verifying the file flash:/sc3170-ibos710-system-r1124.bin on slot 1.....Done.
The images that have passed all examinations will be used as the main startup software images at the next reboot on slot 1.
Decompression completed.
Do you want to delete flash:/SC3170-IBOS710-R1124.ipe now? [Y/N]:y
<SC 3170-48G-6X>save
The current configuration will be written to the device. Are you sure? [Y/N]:y
Please input the file name(*.cfg)[flash:/startup.cfg]
(To leave the existing filename unchanged, press the enter key):
Validating file. Please wait...
The startup.cfg file already exists.
Compared with the startup.cfg file, The current configuration adds 0 commands and deletes 0 commands.
If you want to see the configuration differences, please cancel this operation, and then use the display diff command to show the details.
If you continue the save operation, the file will be overwritten.
Are you sure you want to continue the save operation? [Y/N]:y
Saving the current configuration to the file. Please wait...
Saved the current configuration to mainboard device successfully.
<SC 3170-48G-6X>reboot
Start to check configuration with next startup configuration file, please wait.....DONE!
This command will reboot the device. Continue? [Y/N]:y
Now rebooting, please wait.....
```

Verificar integridade do arquivo

ATENÇÃO: Altere a sintaxe de comandos adequando a mesma para o uso do nome do arquivo em questão.

```
<SC-3170-48G-6X>md5sum sc3170-ibos710-boot-r1130.bin
MD5 digest:
04b5f32ad2728086f9811d137d860a36
<SC-3170-48G-6X>md5sum sc3170-ibos710-system-r1130.bin
MD5 digest:
226043edc6f76d709a36ec32502b6d34
<SC-3170-48G-6X>md5sum SC3170-IBOS710-R1130.ipe
MD5 digest:
787f31401d76e21cea3f5ac80c7790df
<SC-3170-48G-6X>
```

Verificar a versão do firmware após a atualização

ATENÇÃO: Altere a sintaxe de comandos adequando a mesma para o uso do nome do arquivo em questão.

Release 1124

```
<SC 3170-48G-6X>display version
INTELBRAS OS Software, Version 7.1.070, Release 1124
Copyright (C) 2023 Intelbras S.A. All rights reserved.
INTELBRAS SC 3170-48G-6X uptime is 0 weeks, 0 days, 0 hours, 4 minutes
Last reboot reason : User reboot
```

```
Boot image: flash:/sc3170-ibos710-boot-r1124.bin
Boot image version: 7.1.070, Release 1124
  Compiled Oct 25 2023 11:00:00
System image: flash:/sc3170-ibos710-system-r1124.bin
System image version: 7.1.070, Release 1124
  Compiled Oct 25 2023 11:00:00
```

```
Slot 1:
Uptime is 0 weeks,0 days,0 hours,4 minutes
SC 3170-48G-6X with 1 Processor
BOARD TYPE:      SC 3170-48G-6X
DRAM:            1024M bytes
FLASH:           512M bytes
PCB 1 Version:    VER.A
Bootrom Version:  111
CPLD 1 Version:   004
Release Version:  INTELBRAS SC 3170-48G-6X-1124
Patch Version :   None
Reboot Cause :    UserReboot
[SubSlot 0] 48GE+6SFP Plus
<SC 3170-48G-6X>
```

```
<SC 3170-48G-6X>display boot-loader
Software images on slot 1:
Current software images:
  flash:/sc3170-ibos710-boot-r1124.bin
  flash:/sc3170-ibos710-system-r1124.bin
Main startup software images:
  flash:/sc3170-ibos710-boot-r1124.bin
  flash:/sc3170-ibos710-system-r1124.bin
Backup startup software images:
  None
<SC 3170-48G-6X>
```

Release 1130

```
<SC-3170-48G-6X>display version
INTELBRAS OS Software, Version 7.1.070, Release 1130
Copyright (C) 2023 Intelbras S.A. All rights reserved.
INTELBRAS SC 3170-48G-6X uptime is 0 weeks, 0 days, 1 hour, 53 minutes
Last reboot reason : User reboot
```

```
Boot image: flash:/sc3170-ibos710-boot-r1130.bin
Boot image version: 7.1.070, Release 1130
  Compiled Mar 24 2025 11:00:00
System image: flash:/sc3170-ibos710-system-r1130.bin
System image version: 7.1.070, Release 1130
  Compiled Mar 24 2025 11:00:00
```

```
Slot 1:
Uptime is 0 weeks,0 days,1 hour,53 minutes
SC 3170-48G-6X with 1 Processor
BOARD TYPE:      SC 3170-48G-6X
DRAM:            1024M bytes
FLASH:           512M bytes
PCB 1 Version:   VER.A
Bootrom Version: 111
CPLD 1 Version:  004
Release Version: INTELBRAS SC 3170-48G-6X-1130
Patch Version   : None
Reboot Cause    : UserReboot
[SubSlot 0] 48GE+6SFP Plus
```

```
<SC-3170-48G-6X>display boot-loader
Software images on slot 1:
Current software images:
  flash:/sc3170-ibos710-boot-r1130.bin
  flash:/sc3170-ibos710-system-r1130.bin
Main startup software images:
  flash:/sc3170-ibos710-boot-r1130.bin
  flash:/sc3170-ibos710-system-r1130.bin
Backup startup software images:
  None
<SC-3170-48G-6X>
```