

intelbras

Intelbras

LSWM2SP2PB &

LSWM2SP4PB

Interface Cards

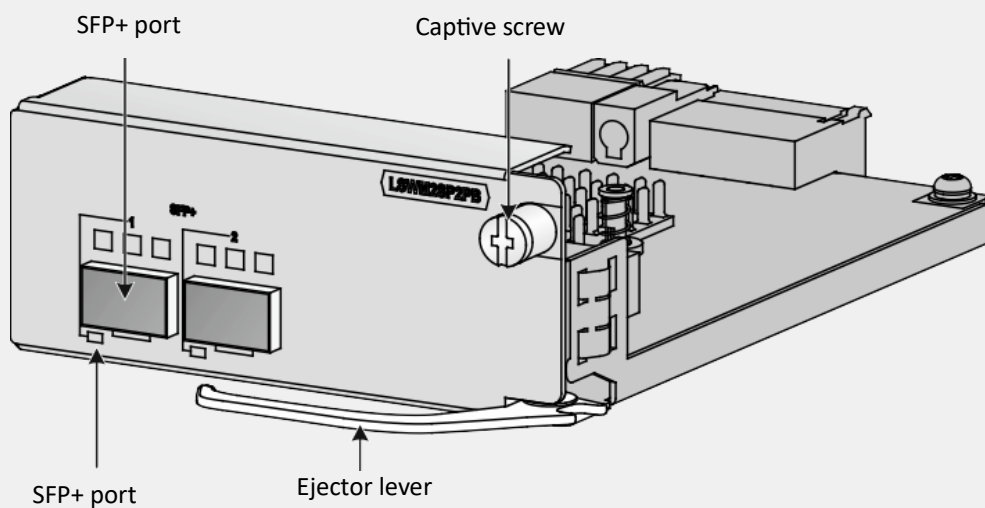
User Manual

Intelbras LSWM2SP2PB & LSWM2SP4PB Interface Cards User Manual

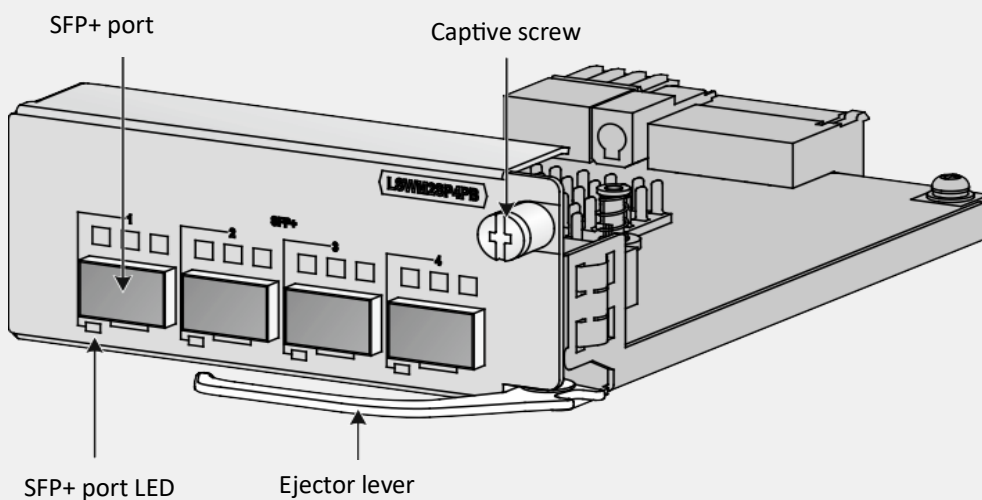
Overview

The LSWM2SP2PB interface card provides two SFP+ ports.

LSWM2SP2PB



LSWM2SP4PB



The switch models that the LSWM2SP2PB & LSWM2SP4PB interface cards are applicable to might change over time. For the most up-to-date list of applicable switch models, contact Intelbras Support or marketing staff.

The restrictions for using the LSWM2SP2PB and LSWM2SP4PB vary by device model. For more information, see the installation guide for the device.

Installing and removing the card

- The installation and removal procedures are the same for the LSWM2SP2PB and LSWM2SP4PB interface cards. This section uses the LSWM2SP2PB interface card as an example.
- Prepare the following tools before you install or remove the card: Phillips screwdriver, flat-blade screwdriver, and ESD wrist strap.
- No installation tools are provided with the device. Prepare these tools yourself.

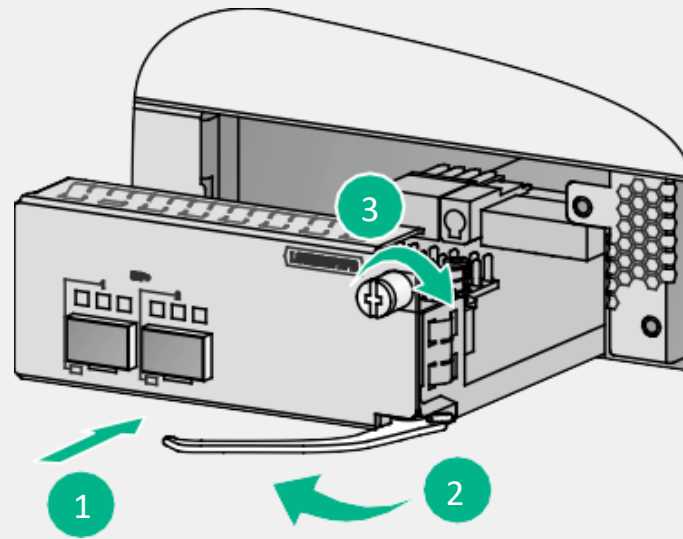
1 - Safety precautions

- Before you install or remove the card, wear an ESD wrist strap and make sure the strap makes good skin contact and is reliably grounded.
- To avoid device damage, do not use excessive force when you install or remove the card.

2 - Installing the card

Remove the filler panel (if any) from the target slot before installing the card.

Keep the removed screw and filler panel secure for future use.



(1) Unpack the card. Insert the card slowly into the slot along the guide rails.

(2) Rotate inward the ejector lever until the card is in close contact with the switch.

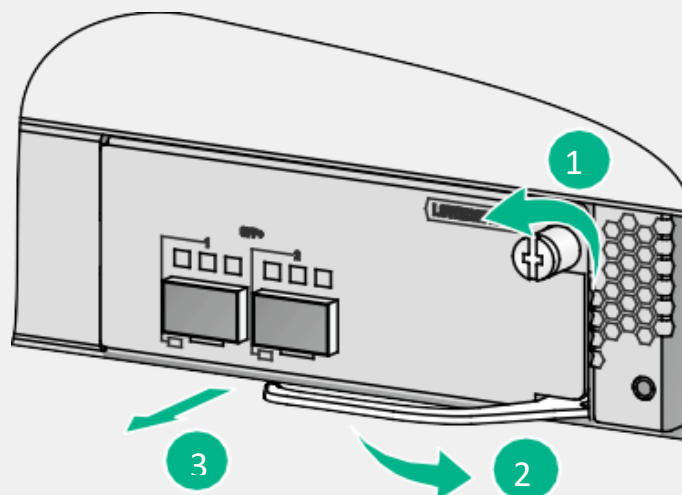
(3) Use a Phillips screwdriver to tighten the captive screw on the card.

3 - Removing the card

To avoid cable damage, remove the cables from the card before removing the card.

If you are not to install a new card after removing the original one, install a filler panel in the slot to prevent dust and ensure good ventilation in the device.

Place the removed card on an anti-static mat or in an anti-static bag.



- (1) Use a Phillips screwdriver to loosen the captive screw on the card.
- (2) Hold the ejector lever to pull the card outward until the card is disconnected from the connectors.
- (3) Hold the card with both hands and take it out slowly.

Verifying the installation

After the installation is complete, determine whether the card is operating correctly. If the card fails to operate correctly, perform the following steps:

- Reinstall the card following the installation procedures described in this document.
- If the problem persists, contact Intelbras Support.

Ports

- You can install SFP/SFP+ modules and SFP/SFP+ network cables in the SFP+ ports.
- The SFP-GE-LX-SM1310-BIDI and SFP-GE-LX-SM1490-BIDI transceiver modules must be used in pairs.
- Intelbras transceiver modules and cables available for the card are subject to change over time. For the most recent list of Intelbras transceiver modules and cables available for the card, contact Intelbras Support or marketing staff.

Model	Central wavelength	Connector	Cable specifications	Modal bandwidth (MHz*km)	Max transmission distance
10-GE SFP+ transceiver modules 10G SFP+					
SFP-XG-LX-SM1310-E	1310 nm	LC	9/125µm SMF	-	10km (6.21 miles)
SFP-XG-SX-MM850-E	850 nm	LC	50/125µm MMF	2000	300m (984.25 ft)
				500	82m (269.03 ft)
				400	66m (216.54 ft)
			62.5/125µ	200	33m (108.27 ft)

Model	Central wavelength	Connector	Cable specifications	Modal bandwidth (MHz*km)	Max transmission distance
			mMMF	160	26m (85.30 ft)
SFP-XG-LH40-SM1550	1550 nm	LC	9/125µm SMF	-	40 km (24.86 miles)
SFP-XG-LH80-SM1550	1550 nm	LC	9/125µm SMF	-	80 km (49.71miles)
Gigabit SFP transceiver modules					
SFP-GE-T	-	RJ-45	UTP/STP	-	100 m (328.08ft)
SFP-GE-SX-MM850-A	850 nm	LC	50/125µm MMF	500	550 m (1804.46ft)
				400	550 m (1804.46ft)
			62.5/125µm mMMF	200	275 m (902.23ft)
				160	220 m (721.78ft)
SFP-GE-LX-SM1310-A	1310 nm	LC	9/125µm SMF	-	10 km (6.21miles)
			50/125µm MMF	500 or 400	550 m (1804.46ft)
			62.5/125µm mMMF	500	550 m (1804.46ft)
SFP-GE-LH40-SM1310	1310 nm	LC	9/125µm SMF	-	40 km (24.86miles)
SFP-GE-LH40-SM1550	1550 nm	LC	9/125µm SMF	-	40 km (24.86miles)
SFP-GE-LH80-SM1550	1550 nm	LC	9/125µm SMF	-	80 km (49.71miles)
SFP-GE-LH100-SM1550	1550 nm	LC	9/125µm SMF	-	100 km (62.14miles)
SFP-GE-LX-SM1310-BI DI	<ul style="list-style-type: none"> • Transmitting end (TX): 1310 • Receiving end (RX): 1490 	LC	9/125µm SMF	-	10 km (6.21miles)

Model	Cable length	Data rate
10-GE SFP+ copper cables		
LSWM1STK	0.65 m (2.13 ft)	10 Gbps

LSWM2STK	1.2 m (3.94 ft)	
LSWM3STK	3 m (9.84 ft)	
LSTM1STK	5 m (16.40 ft)	
Gigabit SFP copper cables		
SFP-STACK-Kit	1.5 m (4.92 ft)	1250 Mbps

LEDs

The SFP+ port LEDs are not affected by the port LED mode switching button on your switch.
For more information about the port LED mode switching button, see the installation guide for the switch.

LED Status	Description
Steady green	A transceiver module is installed in the port. The port is operating at 10 Gbps, and a link is present on the port.
Flashing green	The port is sending or receiving data at 10 Gbps.
Steady yellow	A transceiver module is installed in the port. The port is operating at 1 Gbps, and a link is present on the port.
Flashing yellow	The port is sending or receiving data at 1 Gbps.
Off	No transceiver module is installed in the port, or no link is present on the port.

LSWM2SP2PB Box Content: 1 x Interface Card - 2 SFP+ ports

LSWM2SP4PB Box Content: 1 x Interface Card - 4 SFP+ ports

Compatible with: SC 5520 Series, SC 5525-24X-2QE, SC 5525-48X-2QE, SC 5525-24X-2HE, SC 5525-48X-2HE.