



Intelbras

LSPM1FANSA-SN &

LSPM1FANSB-SN Fan

Trays User Manual

Intelbras LSPM1FANSA-SN & LSPM1FANSB-SN Fan Trays User Manual

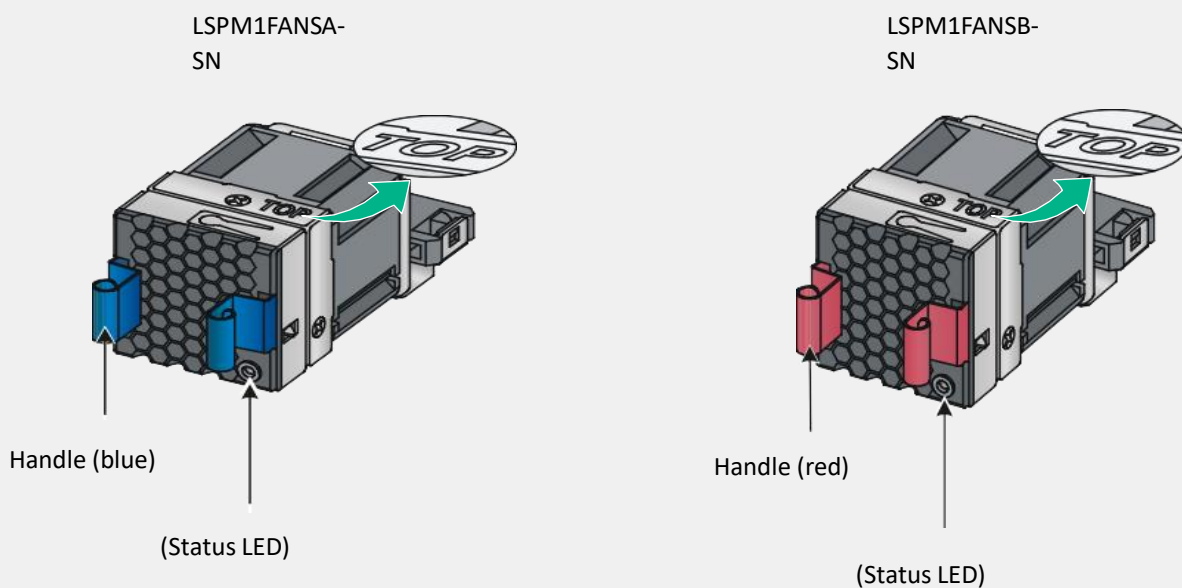
Overview

About the Fan Tray

The LSPM1FANSA-SN fan tray provides airflow from the power module side to the port side. The LSPM1FANSB-SN fan tray provides airflow from the port side to the power module side. The two fan trays feature small size, fast heat dissipation, and hot swapping. They can adjust the fan speed automatically. Both Fan Trays are asset-manageable.

Views

Both the LSPM1FANSA-SN and LSPM1FANSB-SN fan trays are available in black and silver models. Silver models support electronic labels and black models do not.



When you install a fan tray, make sure the "TOP" sign is on the top surface of the fan tray.

The description for the status LED on the LSPM1FANSA-SN or LSPM1FANSB-SN fan tray might vary by device model.

For more information about the status LED, see the installation guide for that device.

Specifications for the fan trays

Item	Specification
Fans	One 40 × 28 × 40 mm (1.57 × 1.10 × 1.57 in) fan
Airflow direction	LSPM1FANSA-SN: From the power module side to the port side LSPM1FANSB-SN: From the port side to the power module side
Max fan speed	20000 R.P.M
Max airflow	20 CFM
Max power consumption	9.8 W
Voltage	12 V
Operating temperature	0°C to 45°C (32°F to 113°F)
Operating humidity	5% to 95% (non condensing)
Storage temperature	-40°C to +75°C (-40°F to +167°F)
Storage humidity	5% to 95% (non condensing)

Installing or removing a fan tray

The installation and removal procedures are the same for the LSPM1FANSA-SN and LSPM1FANSB-SN fan trays.

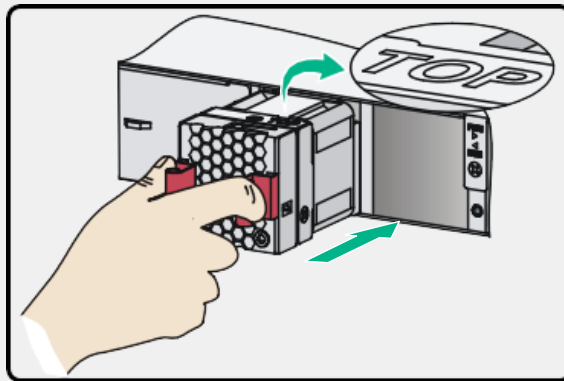
Safety precautions

- Before you install or remove a fan tray, wear an ESD wrist strap and make sure the wrist strap has good skin contact and is reliably grounded.
- Do not touch any bare wire or terminal.
- Do not place the fan tray in a damp environment and prevent liquid from flowing into the fan tray.

- When an internal circuit or component is faulty, do not remove any components from the fan tray. Contact Intelbras Support.

Installing a fan tray

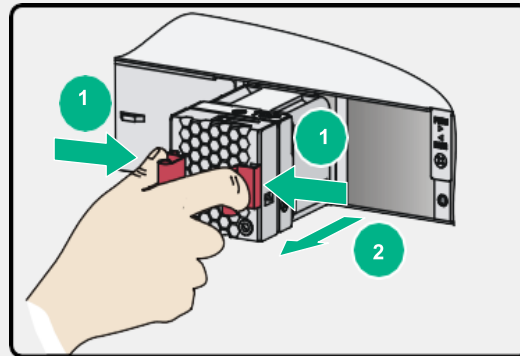
- Before you install a fan tray, make sure the fan tray model is compatible with the device and the airflow direction is as required by the installation site.
- To avoid damaging the connectors on the backplane, insert the fan tray slowly. If you encounter a resistance or the fan tray tilts, remove the fan tray and reinsert it.



Orient the fan tray with the "TOP" sign on the top surface of the fan tray. Holding the handles of the fan tray as shown in the Figure, insert the fan tray slowly into the slot along the guide rails until the fan tray has good contact with the backplane.

Removing a fan tray

- Ensure electricity safety when you remove a fan tray on an operating device.
- Never touch the rotating fans on an operating device.
- To avoid disturbing the dynamic balance of the fans and large Noise caused by the imbalance, Intelbras recommends that you do not touch the fans and rotation axis even if the fans stop rotating.
- Place the removed fan tray in an anti-static mat or bag.



Hold tightly the fan tray handles as shown in the figure and pull the fan tray slowly out of the slot along the guide rails.

Compatible with: SC 5525-48X-6H and SC 5525-24X-6H and SC 5530 Series