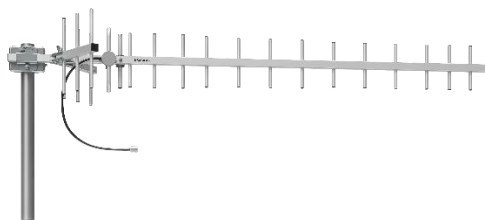
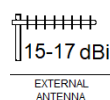


Yagi Antenna 700-960 MHz



- Gain of 15-17 dBi:
- Manufactured with material of high resistance and durability;
- Easy tilt adjustment even after installation.



The 700-960 MHz Yagi antenna is ideal for rural areas, places with weak signal or without access to fixed telephone lines. Simple to install, this product is produced with the best materials, such as aluminum, which guarantees durability for outdoor environments. In addition, it is versatile and can be connected to a fixed cell phone, or to a phone interface!

Technical specifications

FREQUENCY	700 MHz ~ 960 MHz
GAIN	700 MHz: 15 dBi
	830 MHz: 16 dBi
	960 MHz: 17 dBi
BEAMWIDHT (3 dB)	700 MHz: 32°
	830 MHz: 32°
	960 MHz: 27°
VSWR	≤ 2.2
CONNECTOR	N female
IMPEDANCE	50 Ω
MAST DIAMETER	30 to 40 mm
DIMENSION (W x H x D)	1224 x 182 x 335,3 mm