



IZY Speak! ISS 102A

- » Wi-Fi Operation frequency 2.4 GHz
 - » IEEE 802.11 b/g/n
 - » Bandwidth 20 MHz
 - » Power supply 5V / 2A, 80 – 240 VAC
 - » Data Rate 65 Mbps
 - » Bluetooth 4.2 + EDR
 - » Volume adjust
 - » Alexa Built in
 - » Ion lithium Battery
-

IZY Speak is usually installed in a home or office. When connected to a wireless network (Wi-Fi) it allows interaction with other devices and internet applications. Enjoy music playback, access to news, control of connected smart devices, all triggered by voice command. Communication is only possible if you are connected to the internet and all tasks are controlled by an application available in the cloud, in this case in the Alexa Voice Service.

Datasheet

Temperature	0 °C a 50 °C
Power supply	5V / 2A, 80 – 240 VAC
Battery	Ion lithium Battery 3.7 V 2400 mAH
RAM	128 MB
Flash	256 MB
Operational system	Linux
Wi-Fi Operation frequency	2.4 GHz
Wi-Fi Range	80 m
Bandwidth	20 MHz
Standard	IEEE 802.11 b/g/n
Data rate	65 Mbps
Bluetooth	Bluetooth 4.2 + EDR
Bluetooth range	15 m
Output	5 W RMS
Frequency Response	60 Hz – 20 kHz
Microphone	2 Microphones
Far field range (Enviromental Noise < 50 dB)	3 m
Dimenssions (D x A)	72 x 160 mm

Integrated Solution



Figure 1 – System



Figure 2 – Use case

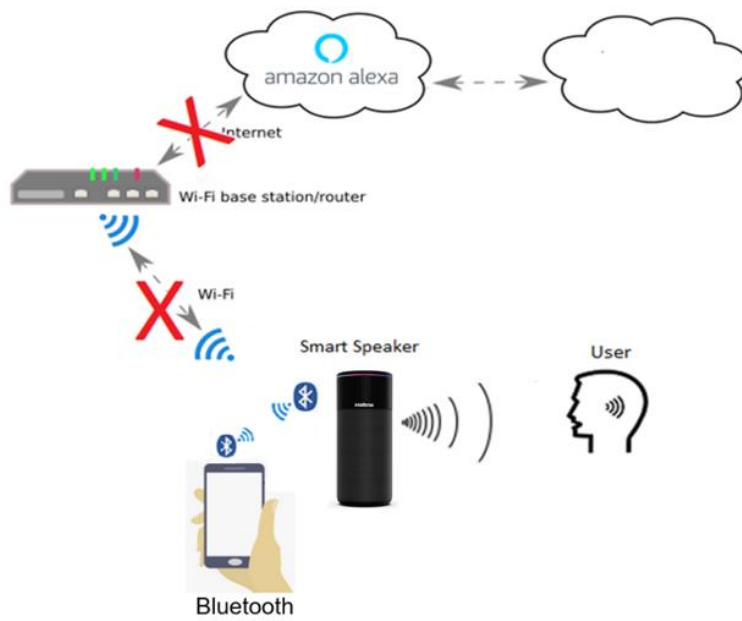


Figure 3 – Not connected